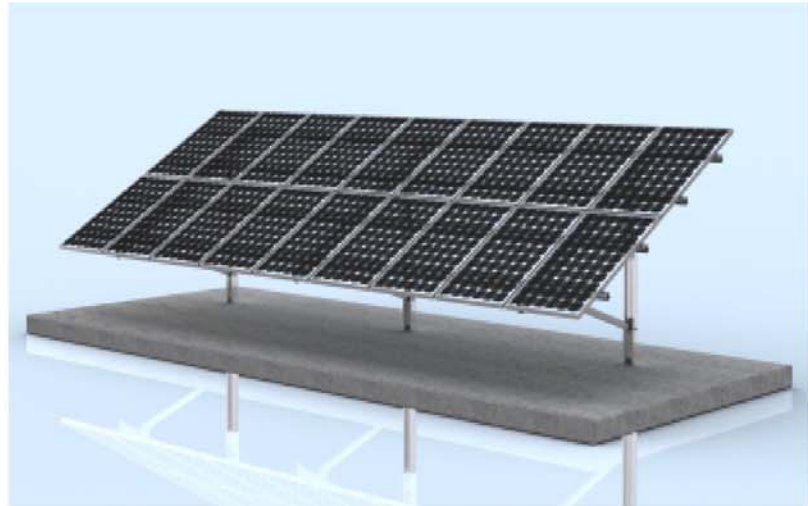


Ground Racking Systems

KM-D : Driven Foundations

The KM-D Series of KNE's Racking Systems is based on driven foundations, ideal for open fields and paddocks. This particular foundation relies on the shear strength of the soil below to ensure stability above. Like the KM-S Ground Based Screw in System, the KM-D Series provides a quick alternate solution to concreting where applicable.



Features

- Foundation columns manufactured from galvanized steel and designed to endure
- Non-invasive foundation construction method results in the system installation being transportable

